

SIT-CIN EYE DROPS

Gatifloxacin Ophthalmic Solution

0.5% w/v

*Broad-Spectrum Protection. Trusted Care.*

**Marketed by:** Human Opthocare

A Division of Human Biolife India Pvt. Ltd.

[www.humanopthocare.com](http://www.humanopthocare.com)



# Product Overview



## SIT-CIN Eye Drops

Gatifloxacin 0.5% w/v

## Fourth-generation Fluoroquinolone antibiotic

## Broad-spectrum coverage

Gram-positive & Gram-negative bacteria

## Rapid bactericidal action

## Sterile ophthalmic solution for topical use



# Why Gatifloxacin?



**Advanced Fluoroquinolone**



**Inhibits bacterial DNA gyrase &  
Topoisomerase IV**

Prevents DNA replication



**Effective against resistant strains**



**Superior penetration into ocular tissues**



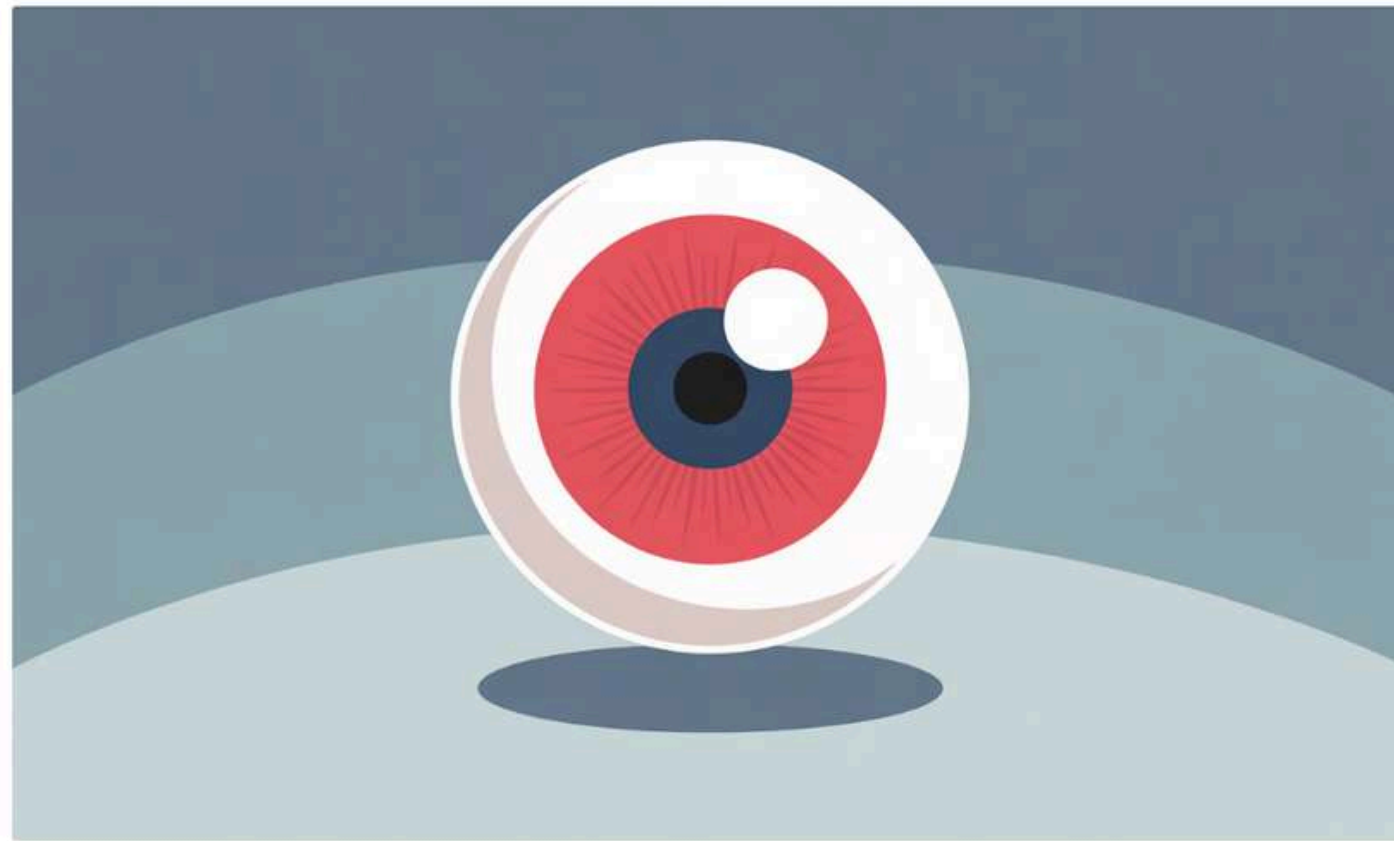
**High efficacy with reduced resistance potential**

# Indications

Sit-CIN is recommended for:

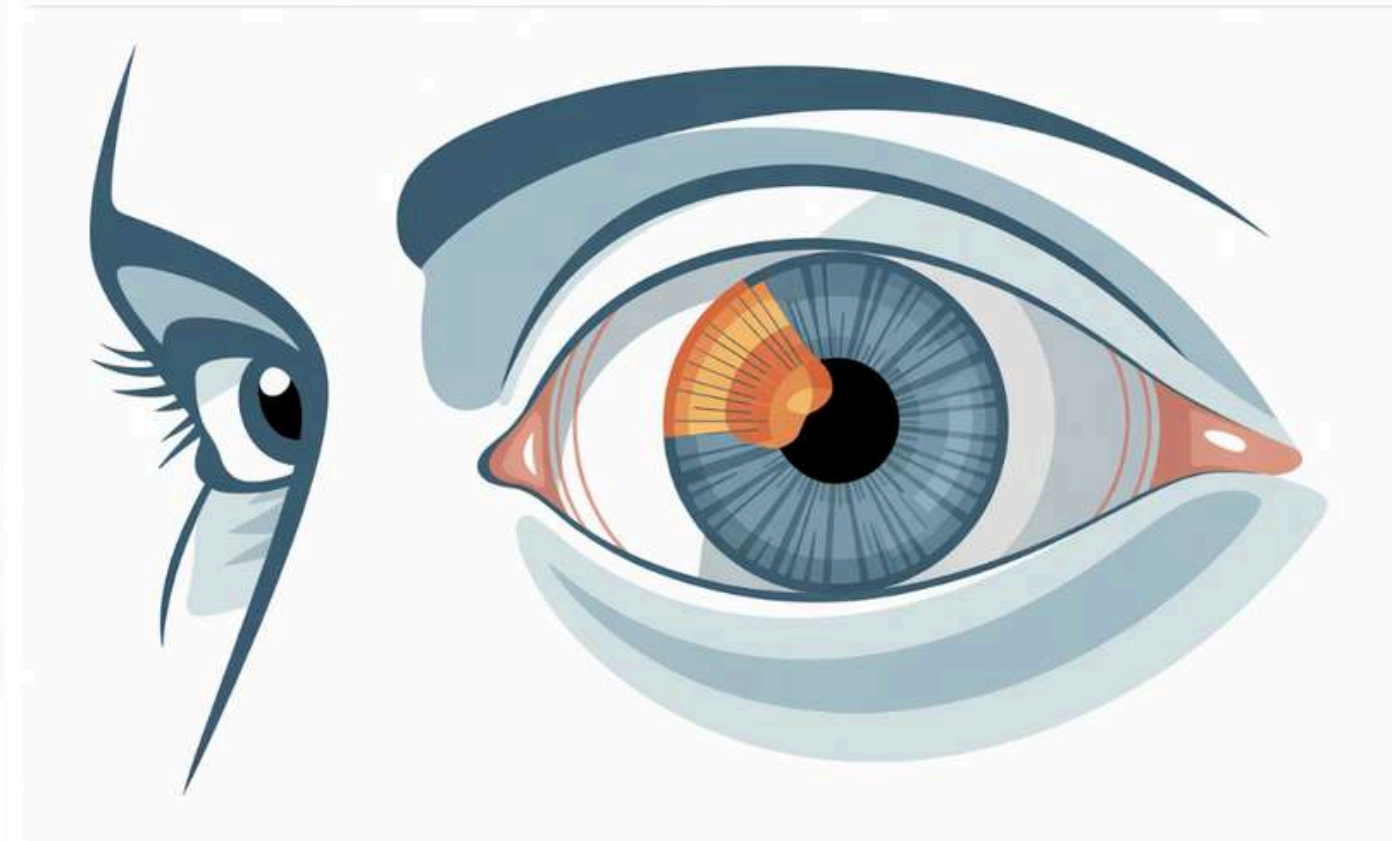
1

Bacterial Conjunctivitis



2

Keratitis & Blepharoconjunctivitis



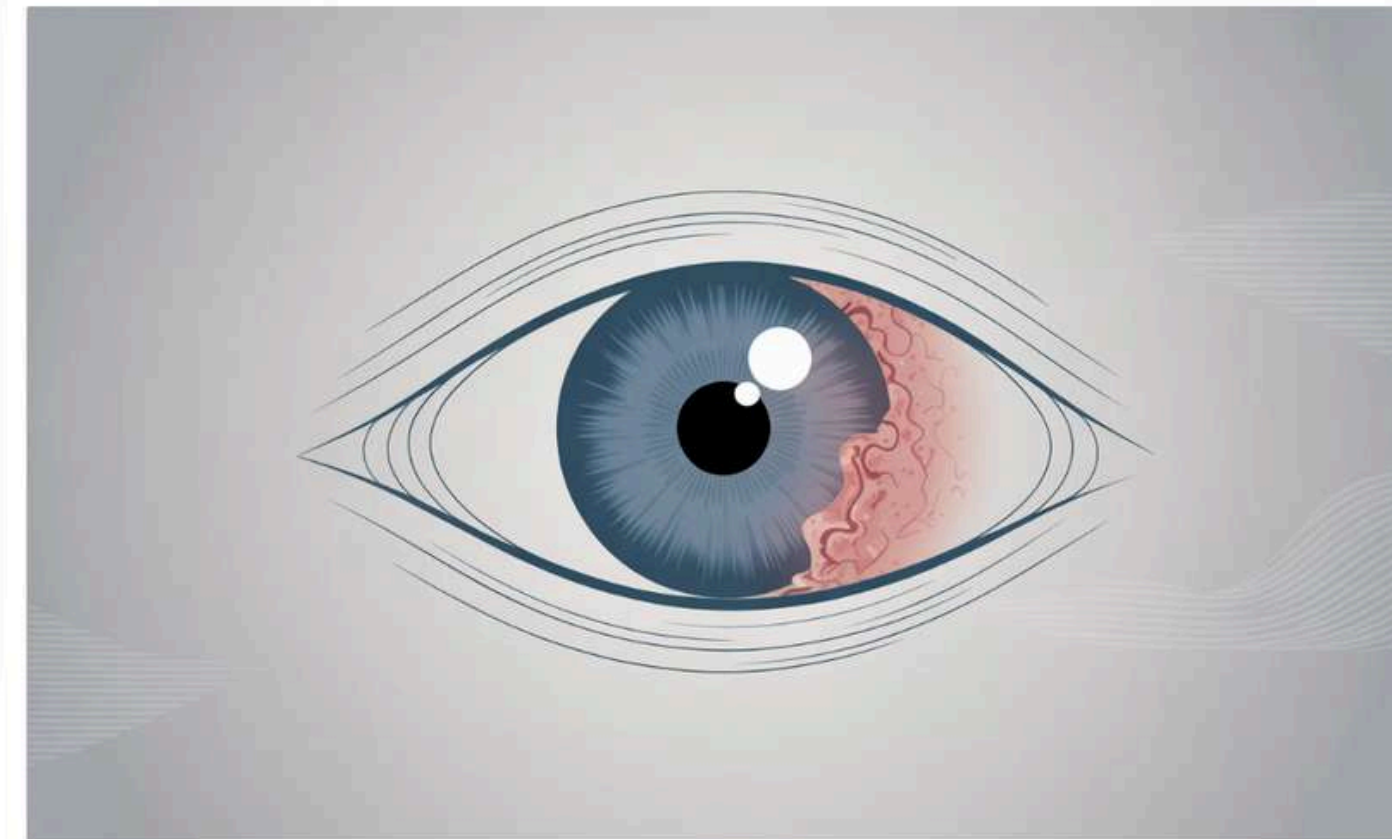
3

Pre- & Post-operative prophylaxis in ocular surgeries



4

Corneal ulcers & superficial ocular infections





# Clinical Advantages

## Key Benefits of **SIT-CIN**:



### **Broad-spectrum antimicrobial coverage**

Effective against both Gram-positive and Gram-negative pathogens



### **Rapid onset of bactericidal action**

Quick elimination of bacterial pathogens



### **Effective against resistant bacterial strains**

Works where other antibiotics may fail



### **High ocular tissue concentration**

Reaches therapeutic levels quickly



### **Reduces risk of post-surgical infections**

Ideal for pre and post-operative care

# Comparison with Other Fluoroquinolones




Parameter	Gatifloxacin (SIT-CIN)	
Gram+ Coverage	✓ Excellent	⚠ Moderate
Gram– Coverage	✓ Strong	✓ Strong
Resistance Potential	✓ Lower	✗ Higher
Ocular Penetration	✓ Superior	⚠ Moderate
Spectrum	✓ Broad	⚠ Narrower

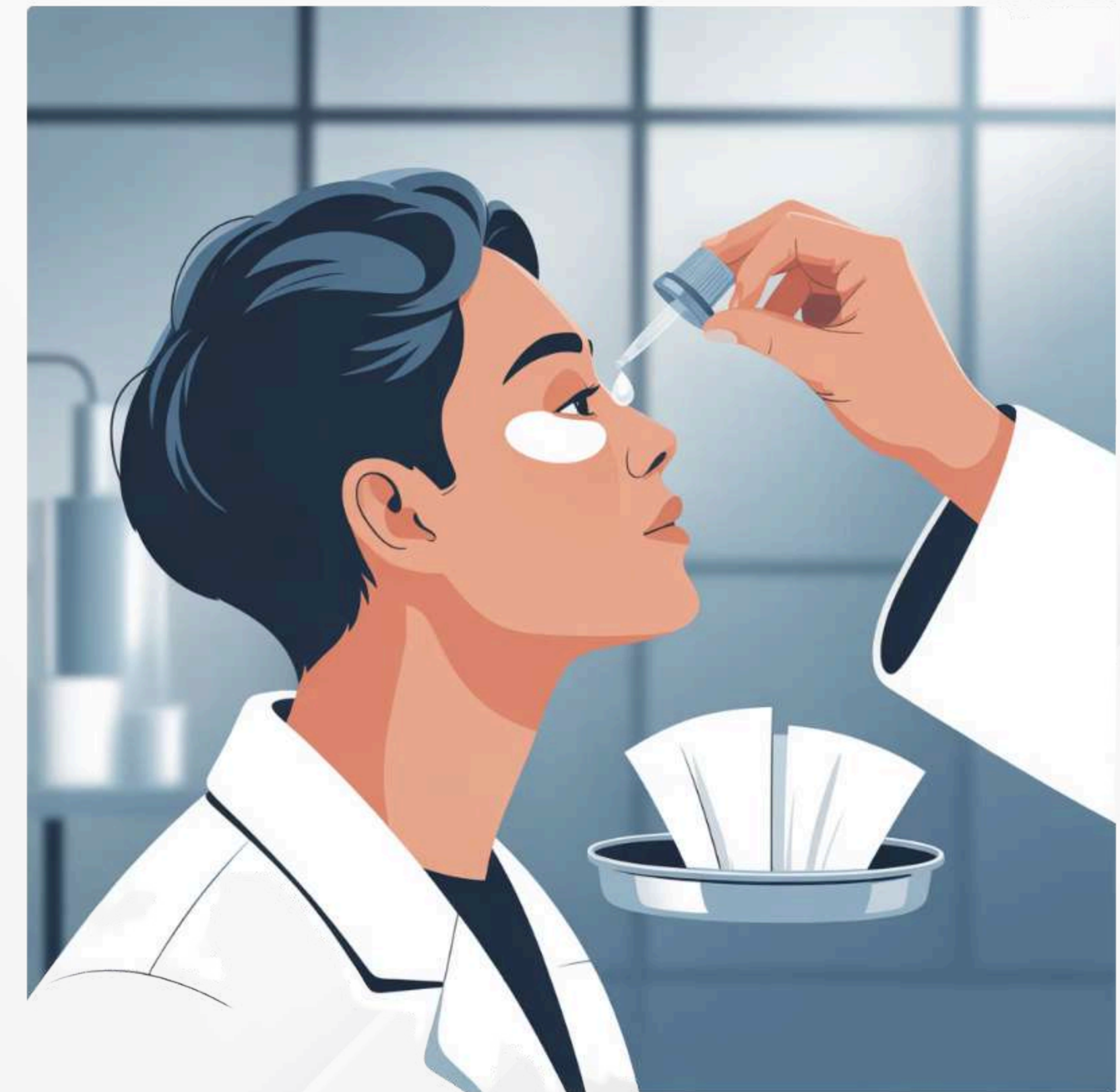


# Dosage & Administration

## Dosage:



-   For topical ophthalmic use only
-  Do not use with contact lenses



# Safety & Tolerability

## Well-Tolerated in Clinical Studies

### Possible side effects (rare & mild):

- Transient eye irritation/burning
- Eye redness
- Headache (rare)

### Contraindicated in:

- Hypersensitivity to quinolones or formulation components





# Why Prescribe SIT-CIN?

## Doctor's Choice For:

### **Broad-spectrum antibacterial protection**

Comprehensive coverage against common ocular pathogens

### **Superior efficacy against Gram+ pathogens**

Better performance where other fluoroquinolones may struggle

### **Reduced resistance potential vs older quinolones**

Advanced molecular structure helps overcome bacterial resistance mechanisms

### **Trusted brand from HumAn Opthocare**

Backed by quality manufacturing and clinical expertise





# Contact Us


Fluromac is a potent ophthalmic corticosteroid for targeted inflammation relief with a strong safety profile when used judiciously.

Use with clinical discretion, especially in high-risk ocular conditions.

**For medical queries or collaboration:**

**HumAn Opthocare – A Division of Human Biolife India Pvt. Ltd.**

 [www.humanopthocare.com](http://www.humanopthocare.com)

 **+91 6283361749**

